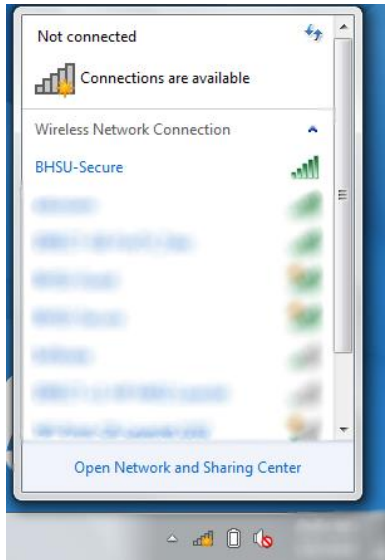


Connecting to BHSU-Secure Network for Windows 7

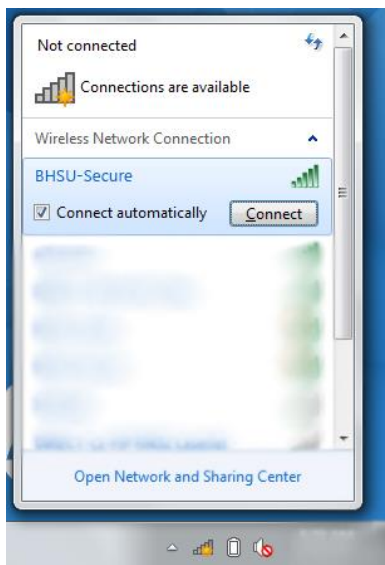


Click the network icon on the lower right corner of the screen.

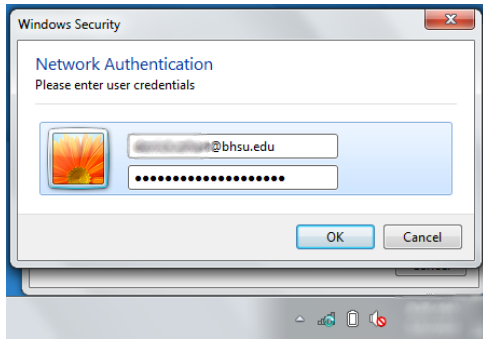
Click the “BHSU-Secure” wireless network.



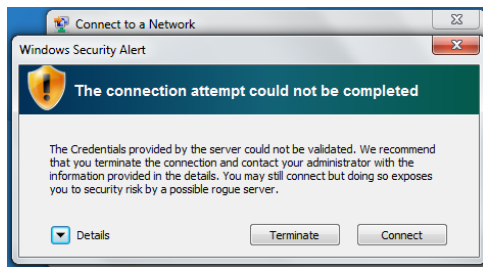
Check the “Connect automatically” box, and then click “Connect”.



Provide your credentials in the form of your email address. For example, jane.smith@bhsu.edu. The password should match your normal email password.

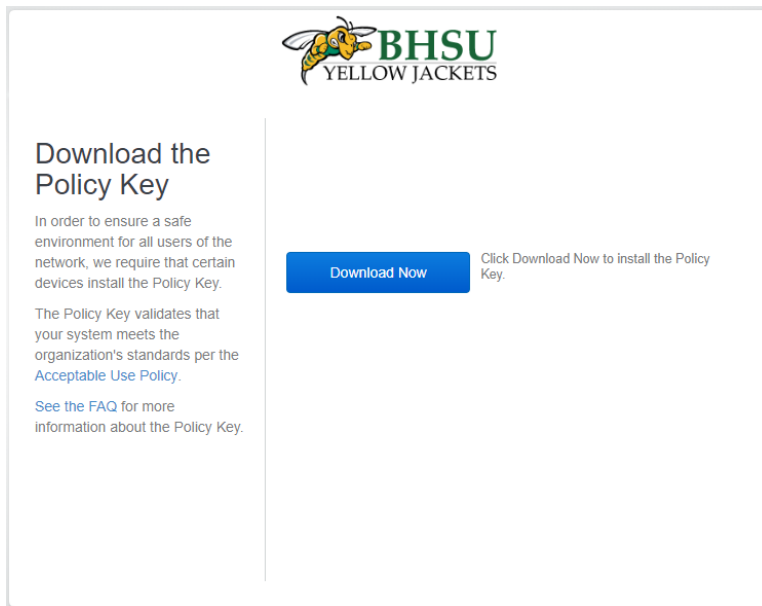


Click "Connect" to continue connecting to BHSU-Secure.



Do not click the "Terminate" button as this will result in a failed connection and would then need to start this process over.

You should be prompted to install the Safe Connect Policy Key the first time you open a web browser. Click the blue "Download Now" button and run the ServicelInstaller.exe file to complete the install.



The screenshot shows the BHSU Yellow Jackets logo at the top. Below it, the heading "Download the Policy Key" is displayed. The text explains that a safe environment requires installing the Policy Key and that the key validates system standards against the organization's Acceptable Use Policy. A blue "Download Now" button is prominently featured, with a note to click it to install the Policy Key. A link to the FAQ is also provided.

BHSU
YELLOW JACKETS

Download the Policy Key

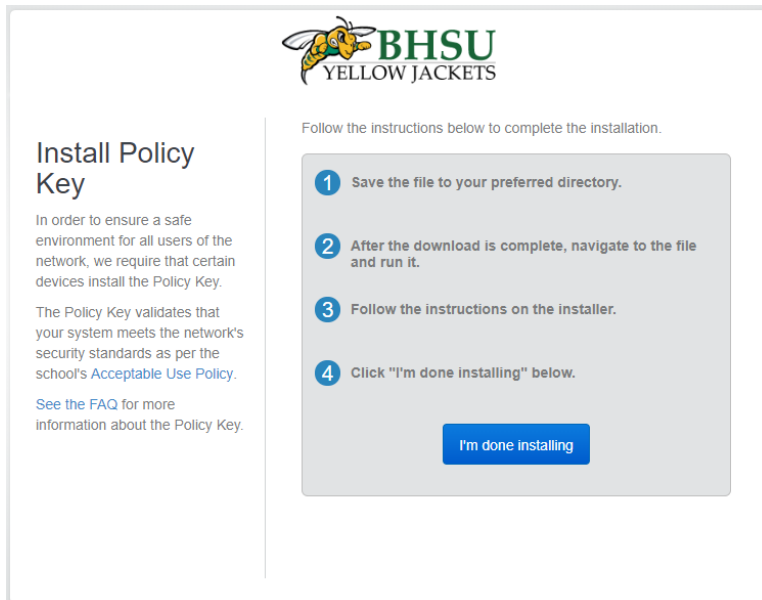
In order to ensure a safe environment for all users of the network, we require that certain devices install the Policy Key.

The Policy Key validates that your system meets the organization's standards per the [Acceptable Use Policy](#).

See the [FAQ](#) for more information about the Policy Key.

[Download Now](#) Click Download Now to install the Policy Key.

Once, you have installed the Policy Key, click the blue "I'm done installing" button. You will then be redirected to the Black Hills State University website. This indicates that you are successfully connected to the Internet.



The screenshot shows the BHSU Yellow Jackets logo at the top. Below it, the heading "Install Policy Key" is displayed. The text explains that a safe environment requires installing the Policy Key and that the key validates system standards against the school's security standards. A list of four numbered steps guides the user through the installation process. A blue "I'm done installing" button is located at the bottom of the instructions.

BHSU
YELLOW JACKETS

Install Policy Key

In order to ensure a safe environment for all users of the network, we require that certain devices install the Policy Key.

The Policy Key validates that your system meets the network's security standards as per the school's [Acceptable Use Policy](#).

See the [FAQ](#) for more information about the Policy Key.

Follow the instructions below to complete the installation.

- 1 Save the file to your preferred directory.
- 2 After the download is complete, navigate to the file and run it.
- 3 Follow the instructions on the installer.
- 4 Click "I'm done installing" below.

[I'm done installing](#)

Please contact the BHSU Helpdesk if you have any issues at 605-642-6580.